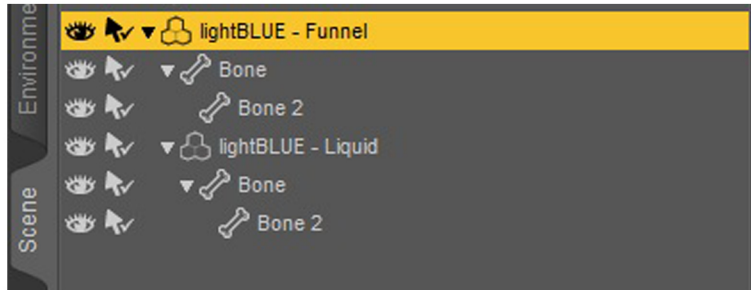


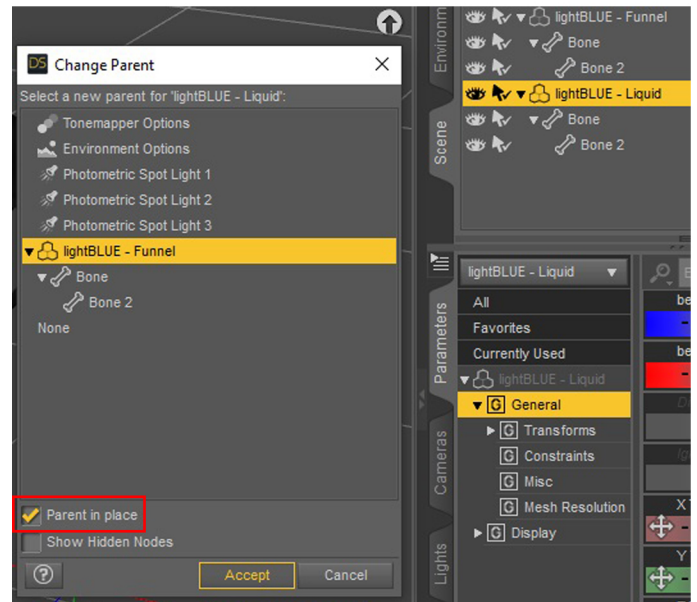
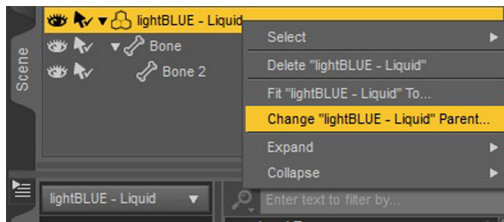
INSTRUCTIONS

Loading the props - AUTOLOADING or MANUAL

AUTOLOADING - double click on the "AutoLoad & Parent - Funnel & Liquid" icon. Both props will be loaded automatically and the "liquid" prop will be parented to the "funnel" prop.

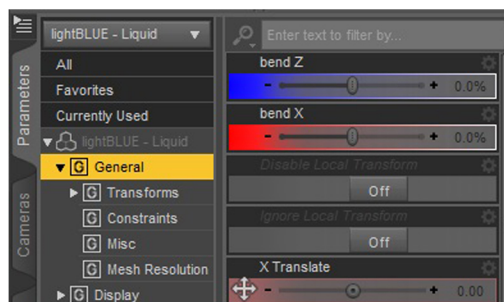
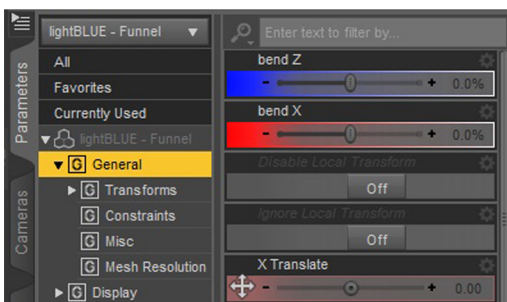


MANUAL LOADING - load the Funnel prop, make sure nothing is selected in the scene, and then load the Liquid prop (do not select the Funnel in the scene when loading the Liquid prop). Right click on the Liquid prop >> select "Change...Parent" option >> select the Funnel prop to be the parent, leave the "Parent in place" option ON >> click "Accept".



"bend X" and "bend Z" - you will find these sliders in Parameters/General (scroll to the top) of both props. These sliders on the Funnel prop will bend the pipe of the funnel. These sliders on the Liquid prop will move the surface of the liquid so the liquid appears slanted (leaning in a chosen direction).

When moving/rotating the Funnel, click on the root of the prop, and the Liquid prop will follow if it is parented as advised above.



— If you encounter any issues feel free to write to lightblue3design@gmail.com —